

$\text{♩} \approx 88$ (mute in)

15 (A) $\text{♩} \approx 100$ (con sord.)

sfp < *mf* > *pp*

24 (B) $\text{♩} \approx 90$

sfp < *mf* > *pp*

31 (C) $\text{♩} \approx 78$ $\text{♩} \approx 90$ senza sord.

sfp < *mf* > *pp*

39 (D)

sfp < *f* > *p* *mf*

45 $\text{♩} \approx 120$

p mf *p* *mf* *p* *mf* *p*

49

mf *p* *mf* *p* *mf* *p* *mf* *p*

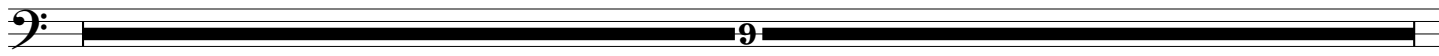
53

p *mf* *p* *f* *p* *f*

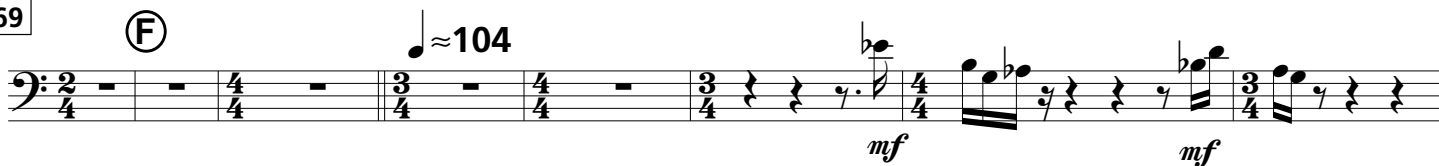
56 (E)

p *mf* *pp*

60



69



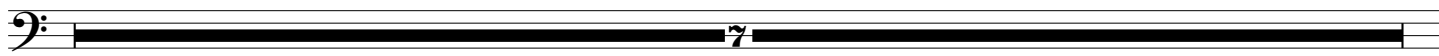
77



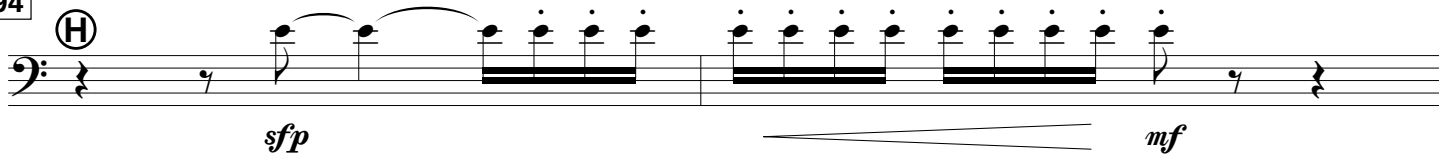
83



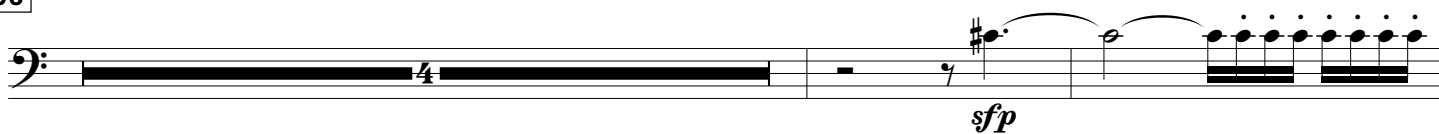
87



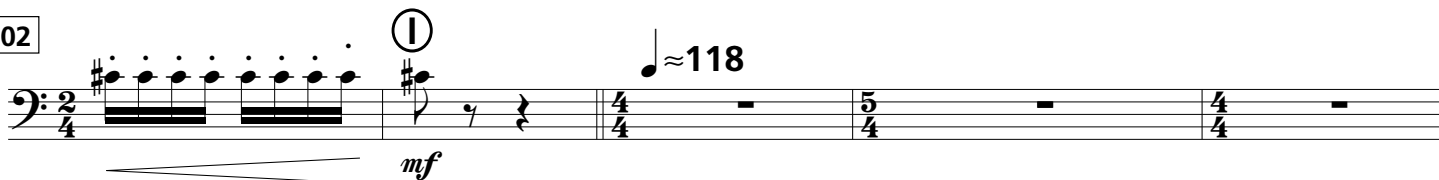
94



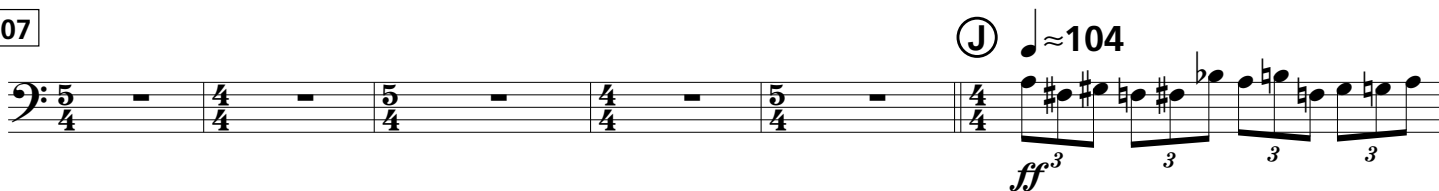
96



102



107



113

Musical notation for measure 113, bass clef. The measure contains a sequence of eighth notes with triplet markings (3) and a final quarter rest.

116

Musical notation for measure 116, bass clef. The measure contains a sequence of eighth notes with triplet markings (3) and a final quarter rest. The dynamic marking *ff* is present.

119

Ⓚ ≈ 128

Musical notation for measure 119, bass clef. The measure is a whole rest. The time signature changes from 2/4 to 4/4. A circled 'K' is above the measure.

129

≈ 112

piano

Musical notation for measure 129, bass clef. The measure contains a sequence of eighth notes with a circled 'L' and a dynamic marking *mp*.

133

Musical notation for measure 133, bass clef. The measure contains a sequence of eighth notes with a circled '2' and a dynamic marking *mf*.

139

Ⓜ

Musical notation for measure 139, bass clef. The measure contains a sequence of eighth notes with a circled 'M' and a dynamic marking *mp*.

144

Musical notation for measure 144, bass clef. The measure contains a sequence of eighth notes with triplet markings (3) and a dynamic marking *mf*.

148

Musical notation for measure 148, bass clef. The measure contains a sequence of eighth notes with triplet markings (3) and a dynamic marking *mf*.

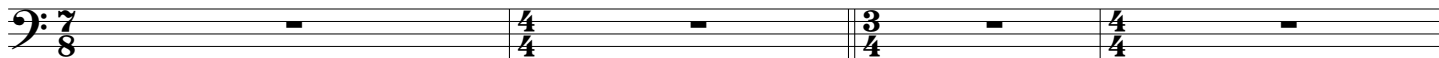
151

Ⓝ ≈ 104

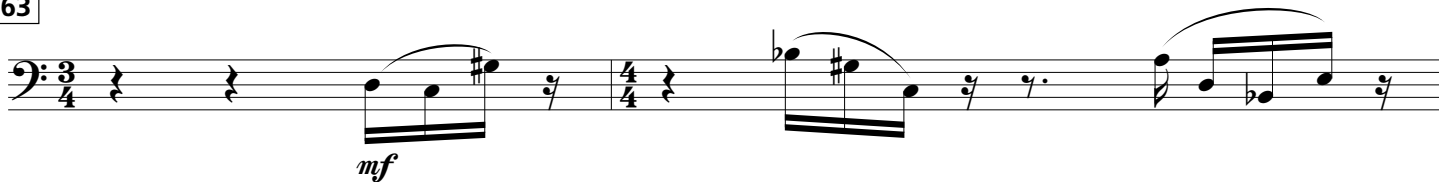
Musical notation for measure 151, bass clef. The measure is a whole rest. The time signature changes from 7/8 to 4/4. A circled 'N' is above the measure.

159

Ⓞ ♩ ≈ 98



163



165



168



170

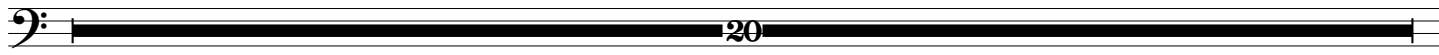


173

Ⓟ



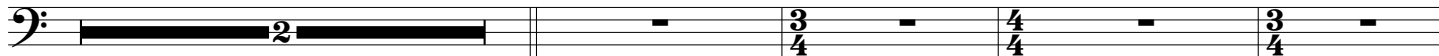
176



196

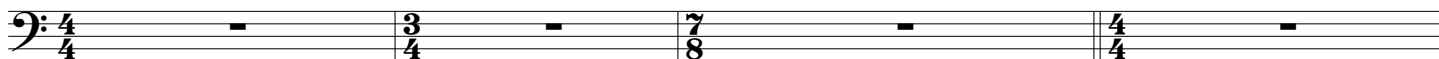
Ⓞ

♩ ≈ 86



202

Ⓡ ♩ ≈ 96



206

f 3 3 3 3 3

209

3 \textcircled{S} $\text{♩} \approx 108$ *gliss.* *mp*

215

f $\text{♩} \approx 88$ *cresc. ...* 5 5

218

ff *p* *f* 3 3 3 3

221

\textcircled{T} $\text{♩} \approx 98$ *f*

223

f

225

\textcircled{U} $\text{♩} \approx 88$ *ffp* *ppp*

230

\textcircled{V}

240

\textcircled{W}